



• **Cactus Botanic** •
Raw materials for Health Industry



Cactus Botanic Limited
Add: Suit B, 29 Harley Street,
London, England W1G9Q

Cactus Botanic (Shanghai)Co.,Ltd
FDA No.17107601196
Ph:86.21.5169.6902
Fax:86.21.5106.2932
Add: 13/F-D, Block 2, No. 628, Zhang Yang
Road, Shanghai 200122, China

GB Biotech Inc
FDA No.11934478090
Ph: 562.219.2167
Fax: 562.546.1323
Add:1008 W Valley Blvd #6278, Alhambra,
CA 91803

Cactus Botanics

- > [Company Overview](#)
- > [Company Chart](#)
- > [Certificates](#)
- > [Laboratories](#)
- > [Manufactures](#)
- > [Social Responsibilities](#)
- > [Products](#)

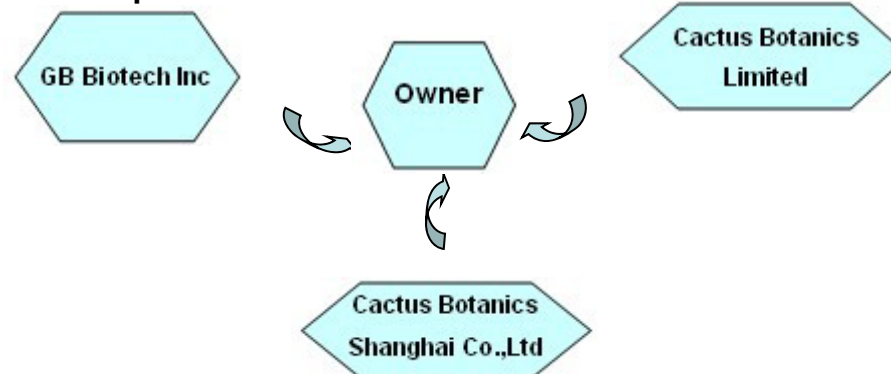


At Cactus Botanics, you will find High quality products with nice service.

Company Introduction/Overview

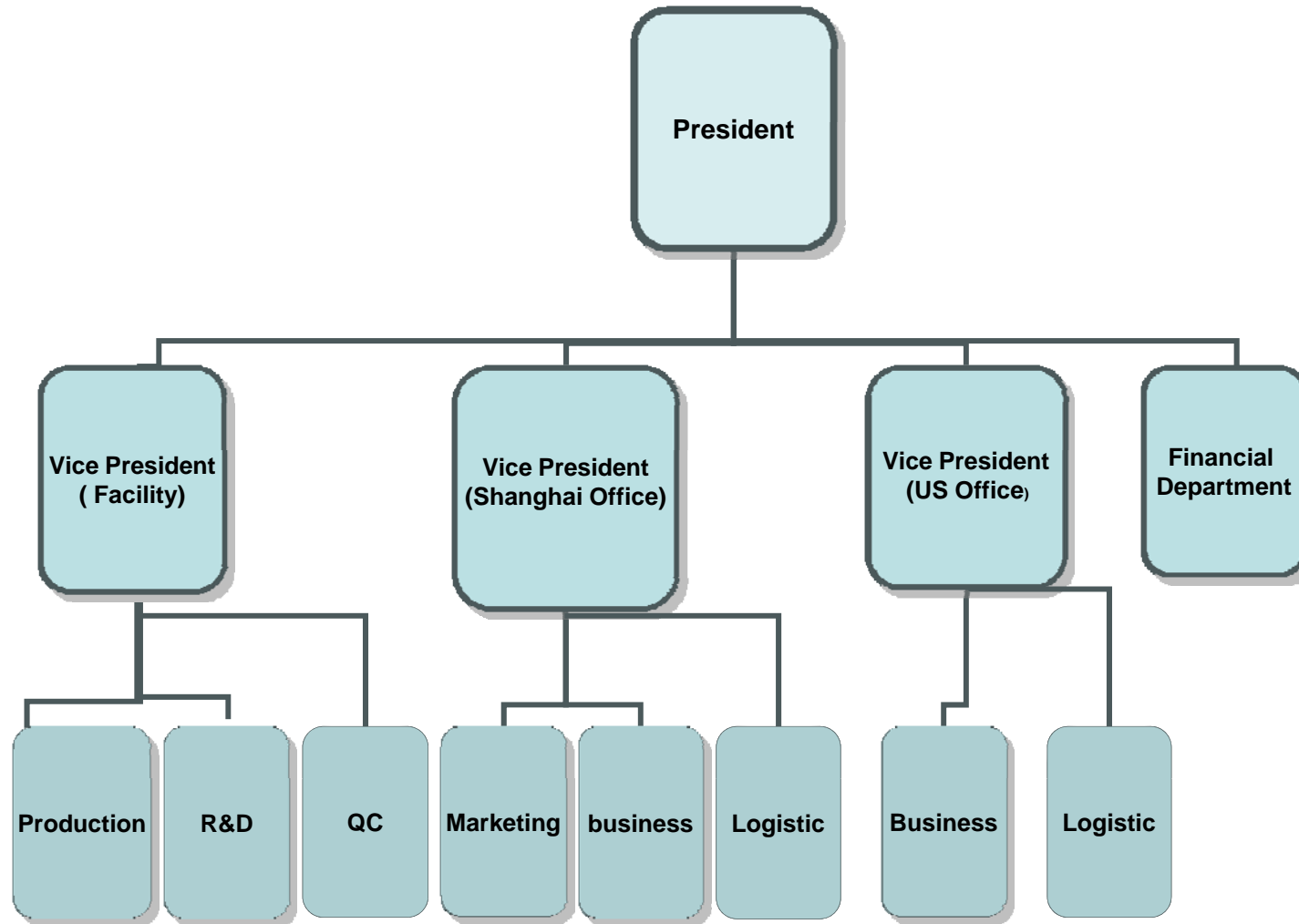


Cactus Botanics Limited was registered in London,UK in 2005. We develop very fast and now own three companies all over the world:



We cooperate with manufactories all over the world to develop and market innovative ingredients for Nutritional Market. Our raw materials range is from Botanicals to Amino Acid, Minerals and other nutritional ingredients. We offer custom blending service at our GOOD QUALITY CONTROL SYSTEM facilities.

Company Introduction/Chart



Company Introduction/Certificate

- FDA Certificate



Company Introduction/Certificate

- Kosher Certificate.



KOF-K

Kosher Supervision

201 The Plaza, Teaneck, NJ 07666
Phone: (201) 837-0500 Fax: (201) 837-0126

1/63

February 28, 2010 Page: 1 of 16

Certificate ID: ESCOZ-WULMK Expiration Date: February 28, 2010

Total products on this certificate: 516 Kof-K ID: K-0001910

Please be advised that the products listed below distributed by:

CACTUS BOTANICS (SHANGHAI) CO., LTD / CACTUS BOTANICS LIMITED
137-D Block 2, No. 628 Zhang Yang Road
SHANGHAI 200122
CHINA

we under our ORTHODOX RABBINICAL SUPERVISION and we certified KOSHER

PRODUCT NAME	STATUS	KIDS
5-HTP	PARVE	KP1G0KAITP
ACHYRANTHUS EXTRACT	PARVE	KP1H0GPWU9
ACONITE EXTRACT	PARVE	KP1V0K0VFD
ACTINIDIA EXTRACT	PARVE	KP1C30P0Z0
ADENOPHOBA EXTRACT	PARVE	KP1F0C0C0MKE
ADzuki BEAN EXTRACT	PARVE	KP1C304060B
AGNUS CASTUS KAMPPEROL EXTRACT	PARVE	KP1H000P7EX
AGRIDORY EXTRACT	PARVE	KP1H000V40
AIYE LEAF EXTRACT	PARVE	KP1M01V0L07
AKERIA CAULIS EXTRACT	PARVE	KP1U21W7V02
ALFALFA EXTRACT	PARVE	KP1L00K07M0
ALFALFA JUICE POWDER	PARVE	KP1K0E1T0P4
ALFALFA POWDER	PARVE	KP1L0C00W0XU
ALISMIA EXTRACT	PARVE	KP1F0R090L0
ALL-HEAL EXTRACT	PARVE	KP1L00T0H00
ALLIUM SATIVUM EXTRACT	PARVE	KP1E0H0D07C
ALMOND EXTRACT	PARVE	KP1W0E1N0W1S
ALMOND POWDER	PARVE	KP1K11K1L1Z
ALOE EXTRACT	PARVE	KP1M0C0M0E0
ALOE VERA JUICE POWDER	PARVE	KP1K0W1S0T0W
ALOE VERA POWDER	PARVE	KP1L0H0H0M17
ALTHAEA ROSAE ROOT EXTRACT	PARVE	KP1V200C0Q0S
AMGMIUM EXTRACT	PARVE	KP0K1E1S1S1S1
AMUR COBSTER BARK EXTRACT	PARVE	KP1M0P0F1E1M
AN LEAF SUMMER EXTRACT	PARVE	KP1S0R0E1M1K0
ANDROGRAPOLIDE EXTRACT	PARVE	KP1Q1G0V1S1S
ANEMARHESAE ASPHODELLOIDES EXTRACT	PARVE	KP1L1X0W1C1N0W0
ANGELICA EXTRACT	PARVE	KP1D1H0W1E1V1S1
ANNUAL ARTEMISIA EXTRACT	PARVE	KP1V1A0P1S1D

This certificate is effective until February 28, 2010.

Sincerely,



To verify or for the most up to date certificate please go to
www.KosherCertificate.com

Rabbi Michael Bruckman
Rabbinic Administrator



At Cactus Botanic, you will find High quality products with nice service.

Company Introduction/Laboratories

- Cactus Botanics invest to set up Labs in manufactures to find new components and develop new ingredients for health industry.
- Cactus Botanics' strict third part Quality Control and Statistical Analysis are done in these Labs, based on clients' requirements,.
- Cactus Botanics also test our products to the third part labs in Shanghai, USA, Europe, such as: Pony Testing International Group,Shanghai, SGS, Eurofin, ChromaDex,Inc and so on.
- Cactus Botanics offer clinical researches and Drug Registration service according to clients' orders.



Company Introduction/Manufactures

Our factories are well built according to GOOD QUALITY CONTROL SYSTEM standard. All the production process from purchasing raw materials to package is under our rigorous control.



Our manufacturers are mainly located in China, India, South America, South Africa, United States and Europe according to the botanicals source situations. Choosing qualified Botanicals raw materials is the first step for our success.



Social Responsibility: Employees

We provide each employee the opportunities to grow and develop with the company in a truly cooperative team effort. To support our rapid growth, we are continuously seeking candidates for some leadership positions.

Cactus Botanics offers all employees:

- **Monthly Salary & Quarter Performance-related Bonus**
- **Social insurance & welfare**
- **Official Vacations**
- **Qualification Training**
- **Comfortable Working Environment**



Social Responsibility/Charity

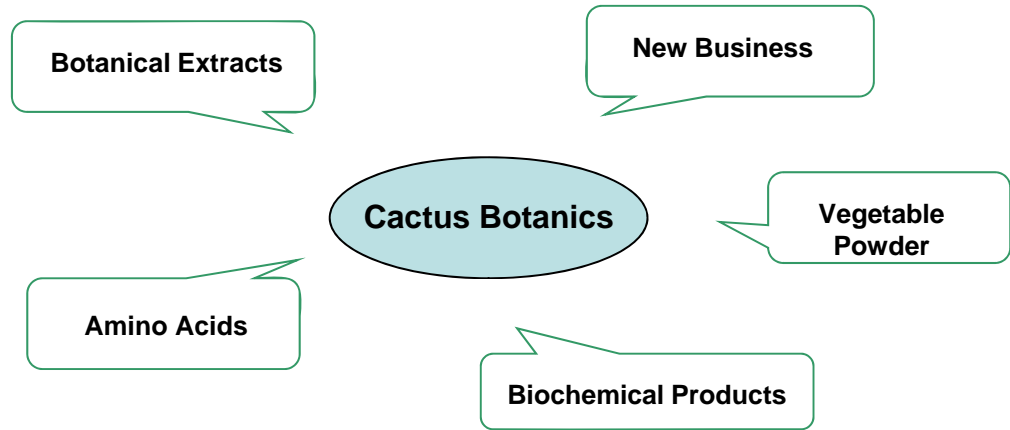
Cactus Botanics devotes to charity from its foundation. Cactus Botanics has helped numbers of students in poor area to go to school for 3 years. They are from primary school; junior middle school to high middle school. Followings are photos of some of them.

Cactus Botanics has joined to donate primary school campuses in the mountainous area of Guangxi, China. Cactus Botanics is still working on helping to improve China primary education in poor areas. It believes: Enterprises need to be responsible for the social responsibilities.



At Cactus Botanics, you will find High quality products with nice service.

Products



- Bamboo Leaves Extract >
- Griffonia simplicifolia Extract 5-HTP >
- Milk Thistle Extract Silymarin>
- Resveratrol >
- Helicidium 95% >
- Stevioside>
- Lutein Powder 80% >

Top Products

- < Ginseng Extract series
- < Epimedium Extract Icarrins
- < Brown Seaweed Extract (Fucoidan)
- < Deodorized Garlic Powder (Allicine)
- < Zeaxanthin
- < L-Carnosine
- < Bayberry Bark Myricetin 80%



At Cactus Botanic, you will find High quality products with nice service.

Products

• Botanical Extract

5-HTP Griffonia simplicifolia Extract 95% HPLC
 Achyranthes Bidentata Bl.Extract 5:1 TLC
 Alfalfa Extract 5:1 TLC
 Almond Extract 5:1/10:1 TLC
 Andrographis Paniculata Andrographolide 5% HPLC
 Angelica Extract(Dong Quai) Ligustilide 1%/10:1 HPLC
 Artichoke Powder Extract 4:1 TLC
 Astragalus Extract Polysaccharides 20% ,50% UV
 Atractylodes lancea Extract 10:1 TLC
 Avena Sativa Extract 10:1 TLC
 Baikal skullcap Extract Baicalin 30% UV
 BaJiTian (Morinda officinalis How) Extract 5:1 TLC
 Bamboo Leaves Flavones 24%, 30%,35%, 50% UV
 Bamboo shoot Extract 10:1 TLC
 Basil Extract Alkaloids 0.2%,0.3%HPLC
 Bayberry Bark Extract Myricetin 80% HPLC
 Bearberry (Urva-Ursi) Extract 5:1 TLC
 Berberis vulgaris(barberry) Extract 6:1 TLC
 Birch Tree Leaf Extract 4:1 TLC
 Bilberry Extract Anthocyanidins 25% UV
 Bitter Melon Powder Extract 10:1 TLC
 Black Currant Anthocyanidins 25% UV
 Black Cohosh Extract Triterpenoid Saponis 2.5%, 8%
 HPLC
 Black Soybean Hull Extract (Anthocyanin 10% UV)
 Broccoli Extract 20:1 TLC
 Brown Seaweed Extract Fucoidan 85%
 Capsicum Extract 10:1 TLC
 Cascara Sagrada Extract 4:1 TLC
 Catsia tora Linn Extract 10:1 TLC
 Cassia Nomame Extract Flavanols 8% UV
 Cassia Twig Extract 10:1 TLC
 Celery Seed Extract 5:1 TLC
 Chamomile Extract 4:1 TLC
 Chinese Corktree Bark Extract 10:1 TLC
 Chinese Fox-Glove Root Extract 5:1 TLC
 Chinense Gentian Extract 4:1/10:1 TLC

Chinese Thorowax Root Extract 5:1 TLC
 Chinese wolfberry Root Bark Extract 5:1 TLC
 Chrysanthemum Flower Extract 12:1 TLC
 Cinnamon Bark Extract 10:1 TLC
 Cistanche Polyphenols 16%,30% UV
 Citrus Aurantium Synephrine 4%-30%HPLC
 Cnidium Fruit Osthole 10%,35%,50%,90% HPLC
 Common Anemarrhena Rhizome Extract 10:1 TLC
 Common Curculigo Extract 5:1 TLC
 Common Scouring Rush Herb Extract 10:1 TLC
 Dahurian Patrinia Herb Extract 10:1 TLC
 Dandelion Extract Taraxacum mongolicum 4:1/10:1 TLC
 Dodder Seed (Cuscuta Seed) (Semen Cuscutae)Extract 5:1
 TLC
 Discolor Cinguefoil Herb Extract 10:1 TLC
 Dwarf Lilyturf Tuber Extract 5:1 TLC
 Echinacea Extract Plolyphenols 4% UV
 Ellagic Acid 90%HPLC
 Eucommia Bark Extract 5:1 TLC
 Evodiae Extract Evodiamine 5%,10%HPLC
 Eyebright Extract 4:1 TLC
 Feather Cockscumb Seed Extract 5:1 TLC
 Fenugreek Seed Extract (Trigonella Foenum Graecum) 10:1
 TLC
 Fig Extract 10:1 TLC
 Fo-Ti Extract 12:1 TLC
 Fourleaf Ladybell Extract 10:1 TLC
 Fourstamen Stephania Extract 10:1 TLC
 Fructus cornus officinalis(Shan Zhu Yu) Extract 10:1 TLC
 Fucoidan(Fine Finished) 85%
 Galanga Resurrectionlily Rhizome Extract 10:1 TLC
 Gama Oryzanol
 Grape Seed Extract Proanthocyanin 95%UV
 Ganoderma lucidum Extract Polysaccharides 10% UV
 Ganoderma lucidum Extract Polysaccharides 20% UV
 Garcinia Cambogia Powder Extract HCA 60% HPLC
 Garlic Extract (Allicin 0.5% HPLC)
 Ginger Extract Gingerols 2.5%,5%GC
 Ginkgo Biloba Extract Flavone 24%,Lactone 6% HPLC
 (Ginkgolic Acid 1ppm,5ppm HPLC)

Ginseng Panax Extract (Ginsenosides 80% UV)
 Glossy Privet Extract 10:1 TLC
 Goldenseal Extract 4:1 5% total alkaloids
 Gotu Kola Extract Total Triterpenes 10%-90% HPLC
 Grape Skin Extract Polyphenol 65% UV
 Grapefruit Seed Extract 15:1 Water/20:1 Ethanol
 Great Burdock Achene Extract 4:1/10:1 TLC
 Green Barley Juice Extract
 Green Tea Extract
 Grifola frondosa (Maitake) Extract 10:1 TLC
 Gymnema Sylvestre Extract (Gymnemic acids
 25%HPLC)
 Gymnema Sylvestre Extract 5:1 TLC
 Gynostemma Pentaphyllum Extract (Gypenosides 80%,
 98%UV)
 Gotu Kola Extract Asiaticoside 10%-95%HPLC
 Hawthorne Berry Extract Flavones 3% or 10:1UV
 Honeysuckle Flower Extract 5:1 TLC
 Hoodia Gordonii Extract 20:1 TLC
 Hops Extract Hawthorne Leaf Extract Vitexin-2"-0-
 rhamnoside 2%HPLC
 Horny Goat Weed Extract Icarrins 5%-90% HPLC
 Horse Chestnut Extract (Aescin 4:1,10:1, 10%, 20% UV)
 Helicidium 95% HPLC
 Horsetail Extract (Silica acid 7% UV)
 Huperzine Serrate Extract (Huperzine-A 1%,5%,20%
 HPLC)
 Indian Wild Chrysantemum Flower Extract 10:1TLC
 Indigowoad Leaf Extract10:1 TLC
 Jobstears Seed Extract 5:1 TLC
 Jujube Extract 5:1 TLC
 Kelp Extract Powder 4:1 TLC
 Kudzu PuerariaRoot Extract(Isoflavones 40% UV &
 HPLC)
 Largehead Atractylodes Rhizome Extract
 Laurel Leaves Extract
 Lemon Balm (Melissae officinalis) Extract
 Lesser Galangal Rhizoma Extract 10:1 TLC
 Loquat Leaf Extract (Chlorogenic 0.5% Polyphenol
 12% UV)



At Cactus Botanicals, you will find High quality products with nice service.

Products

Lotus Powder Extract
Lutein Powder
Lycopene powder Manyflower Solomonseal Extract 5:1 TLC
Mangosteen Extract Xanthenes 10-50% HPLC
Milk Thistle Extract Silymarin 80% UV
Momordica Charantia Extract 10:1 TLC
Momordica Extract (Luo Hanguo)
Morinda officinalis How Extract 5:1 TLC
Motherwort Herb Extract 10:1 TLC
Mucuna Beans Powder Extract L-Dopa
Mulberry Leaves Extract 1-DNJ 1.0% HPLC
Nettle Extract (Urtica dioica) 4:1 or 1% silica
Nopal Extract 12:1 TLC
Oat Straw Extract 10:1 TLC
Olive Leaf Extract 8:1 TLC
Onion extract 10:1 TLC
Oriental Water Plantain Extract 5:1 TLC
Papaya Extract 4:1 TLC
Passion Flower Extract 4:1 TLC
Pilose Asiabell Root Extract 10:1 TLC
Pineapple Extract 12:1 TLC
Pine Bark Extract (Proanthocyanin 95% UV)
Plantain Seed Extract 10:1 TLC
Policosanol (Octacosanol)
Polyporus Extract 5:1 TLC
Pomegranate Hull Extract Ellagic Acid 40% HPLC
Pomegranate Hull Extract Ellagic Acid 80% HPLC
Pomegranate Hull Extract Ellagic Acid 90% HPLC
Poria Extract 5:1 TLC
Prunella Extract 10:1 TLC
Purslane Herb Extract 10:1 TLC
Red Clover Extract Isoflavone
Red Peony Root Extract 5:1 TLC
Red Yeast Rice Powder 0.4%, 1.5%, 4% HPLC
Rehmannia Extract 6:1 TLC

Reishi Polysaccharides 20% UV
Resveratrol 98% HPLC
Rheum Extract Red Raspberry Extract Ellagic Acid 20% HPLC
Rhizopma Polygoni cuspidati Extract
Rhodiola rosea Extract
Rice Bean Extract 5:1 TLC
Rosehip Fruit Extract 10:1 TLC
Safflower Extract 5:1 TLC
Salvia Miltiorrhiza Extract 5:1 TLC
Schisandra Berry Extract
Schisandra Chinensis Extract
Sea Buckthorn Extract /Oil
Sea Buckthorn Oil (CO2 Super Fluid Extraction)
Seaweed Extract Food Grade
Senega Powder Extract 5:1 TLC
Senna Leaf Extract
Shikimik Acid 90% HPLC
Shrub Chastetree Fruit Extract 10:1 TLC
Siberian Ginseng Extract Eleutherosides 0.8% HPLC
Smoked Plum Extract 10:1 TLC
Songaria Cynomorium Herb Extract 10:1 TLC
Soybean Extract Isoflavone 20%-80% HPLC
Spatholobus Stem Extract 5:1 TLC
St. John's Wort Extract Hypericins 0.3% UV
Tatarian Aster Root Extract 10:1 TLC
Tribulus Terrestris Extract Saponins 20%, -90% UV
Uncaria Stem with Hooks Extract 5:1 TLC
Valerian Root Extract (Valerenic Acids 0.3%, 0.4%, 0.8%)
Weeping Forsythia Extract 10:1 TLC
Wild Yam Extract Diosgenine 6%, 10%, 16%, 20% HPLC
White Kidney Bean Extract 10:1 TLC
White Willow Bark Extract Salicin 10%, 15%, 25% HPLC
Wolfberry Polysaccharides 40% UV
Xanthium strumarium Extract 10:1 TLC
Yanhusuo Extract 10:1 TLC
Yohimbe Bark Extract Yohimbine 8% HPLC
Zeaxanthin

• Amino Acid

L-Cysteine HCl Mono USP 28, AJI92
L-Cysteine HCl Anhy USP 28, AJI92
L-Cysteine Free Base USP 28, AJI92
L-Cystine USP 28, AJI92
L-Leucine USP 24, AJI92, FCCIV
L-Lysine HCl Mono USP 24, FCCIV
L-Methionine USP 24, AJI92, FCCIV
Carbocistein (S-Carboxymethyl-L-Cystenine) EP4, CP2000, AJI92
L-Citrulline AJI92
L-Tyrosine USP24, AJI92
L-Isoleucine USP24, FCCIV
L-Threonine USP24, AJI92, FCCIV
L-Phenylalanine USP24, FCCIV
L-Valine USP24
L-Proline USP24, AJI92, FCCIV
L-Arginine USP24, AJI92, FCCIV
L-Arginine HCl Mono USP24, AJI92
L-Tryptophan USP24, AJI92
L-Histidine AJI92
L-Histidine HCl Mono AJI92
L-Ornithine Mono AJI92
D-Cysteine HCl Mono In-house
DI-Cysteine HCl Mono In-house
DI-Leucine In-house
DI-Phenylalanine FCC IV
DI-Methionine USP28, FCCIV, EP4 8
N-Acetyl-L-Cysteine USP28, AJI92
N-Acetyl-L-Tyrosine AJI92
N-Acetyl-L-Leucine In-house
N-Acetyl-L-Methionine In-house
N-Acetyl-DL-Methionine In-house
N-Acetyl-L-Glutamine In-house
L-Citrulline AJI92
L-Citrulline-L-Malate 1:1 In-house
L-Citrulline-L-Malate 2:1 In-house
L-Citrulline-DL-Malate 1:1 In-house
L-Citrulline-DL-Malate 2:1 In-house



At Cactus Botanic, you will find High quality products with nice service.

Products

• Biochemical Products

L-Carnitine USP 28
L-Carnitine Fumarate NLT 99%
L-Carnitine HCl NLT 98%
L-Carnitine Tartrate NLT 99%
Acetyl-L-carnitine NLT 99%
D-Glucosamine Hydrochloride USP 26
D-Glucosamine Sulfate 2KCl USP 26
D-Glucosamine Sulfate 2NaCl USP 26
N-Acetyl-D-Glucosamine USP 26
Alpha Lipoic Acid USP 28
Chondroitin Sulphate USP 28
Coenzyme Q10 USP 28
Hyaluronic Acid USP 28
Soy Protein Isolate
Indole-3-Carbinol USP 28
Sea Buckthorn Oil
Yolk Lecithin

• Vegetable Powder

Apple Powder
Banana Powder
Black Currant Powder
Blueberry Juice Powder
Blackberry Juice Powder
Coconut Powder
Cranberry Juice Powder
Grape Powder
Goji Powder
Hawthorn Powder
Jujube Powder
Juicy Peach Powder
Lychee Powder
Lemon Juice Powder
Mango Fruit Powder
Papaya Powder
Pineapple Powder
Spirulina Powder
Strawberry Powder
Sweet Orange Powder
Sweet Raspberry Powder



At Cactus Botanic, you will find High quality products with nice service.